

## 7-1 Practice Problems

---

*Write the correct formula for each of the compounds listed below.*

1. Potassium Iodide

\_\_\_\_\_

2. Barium Chloride

\_\_\_\_\_

3. Lithium Bromide

\_\_\_\_\_

4. Sodium Hypochlorite

\_\_\_\_\_

5. Iron (III) Sulfate

\_\_\_\_\_

6. Chromium (III) Sulfide

\_\_\_\_\_

7. Calcium Carbonate

\_\_\_\_\_

8. Sodium Acetate

\_\_\_\_\_

9. Cobalt (II) Fluoride

\_\_\_\_\_

10. Sodium Phosphide

\_\_\_\_\_

11. Tin (IV) Oxide

\_\_\_\_\_

12. Gold (III) Bromide

\_\_\_\_\_

13. Copper (II) Iodide

\_\_\_\_\_

14. Strontium Chloride

\_\_\_\_\_

15. Lithium Acetate

\_\_\_\_\_

16. Magnesium Hydroxide

\_\_\_\_\_

17. Nickel (II) Nitrate

\_\_\_\_\_

18. Silver Oxide

\_\_\_\_\_

19. Zinc Chloride

\_\_\_\_\_

20. Magnesium Phosphate

\_\_\_\_\_

## 7-1 Practice Problems (Continued)

---

*Draw the Lewis dot diagram for each of the following elements.*

21. B

25. Si

22. Cl

26. Na

23. O

27. Al

24. Ne

28. Mg

*Write the chemical formula for each of the following ionic compounds.*

\_\_\_\_\_ 23. Aluminum Sulfide

\_\_\_\_\_ 24. Ammonium Carbonate

\_\_\_\_\_ 25. Calcium Oxide

\_\_\_\_\_ 26. Strontium Chloride

\_\_\_\_\_ 27. Potassium Oxide

\_\_\_\_\_ 28. Sodium Fluoride

## 7-3 Practice Problems

---

*Write the names for each of the following ionic compounds.*

1. KOH

\_\_\_\_\_

2. LiI

\_\_\_\_\_

3. AlF<sub>3</sub>

\_\_\_\_\_

4. FeCl<sub>2</sub>

\_\_\_\_\_

5. MgO

\_\_\_\_\_

6. Co(NO<sub>3</sub>)<sub>2</sub>

\_\_\_\_\_

7. MgSO<sub>4</sub>

\_\_\_\_\_

8. NH<sub>4</sub>Cl

\_\_\_\_\_

9. CrPO<sub>4</sub>

\_\_\_\_\_

10. Ba(OH)<sub>2</sub>

\_\_\_\_\_

11. PbS

\_\_\_\_\_

12. Na<sub>2</sub>CO<sub>3</sub>

\_\_\_\_\_

13. BaF<sub>2</sub>

\_\_\_\_\_

14. Cu(NO<sub>3</sub>)<sub>2</sub>

\_\_\_\_\_

15. AgI

\_\_\_\_\_

16. NiSO<sub>4</sub>

\_\_\_\_\_

17. Zn<sub>3</sub>(PO<sub>4</sub>)<sub>2</sub>

\_\_\_\_\_

18. Na<sub>3</sub>N

\_\_\_\_\_

19. Cu<sub>2</sub>CO<sub>3</sub>

\_\_\_\_\_

20. (NH<sub>4</sub>)<sub>2</sub>SO<sub>4</sub>

\_\_\_\_\_

## 7-3 Practice Problems (Continued)

---

*Write the names for each of the following molecular substances.*

21. SiO<sub>2</sub>

\_\_\_\_\_

22. PCl<sub>3</sub>

\_\_\_\_\_

23. SiF<sub>4</sub>

\_\_\_\_\_

24. N<sub>2</sub>O

\_\_\_\_\_

25. SO<sub>3</sub>

\_\_\_\_\_

26. N<sub>2</sub>O<sub>5</sub>

\_\_\_\_\_

27. IF<sub>5</sub>

\_\_\_\_\_

28. SF<sub>6</sub>

\_\_\_\_\_

29. ClO<sub>2</sub>

\_\_\_\_\_

30. P<sub>4</sub>S<sub>3</sub>

\_\_\_\_\_

31. NO

\_\_\_\_\_

32. SF<sub>4</sub>

\_\_\_\_\_

33. XeF<sub>4</sub>

\_\_\_\_\_

34. SbF<sub>5</sub>

\_\_\_\_\_

35. NH<sub>3</sub>

\_\_\_\_\_

36. SO<sub>2</sub>

\_\_\_\_\_

37. H<sub>2</sub>O

\_\_\_\_\_

38. CS<sub>2</sub>

\_\_\_\_\_

39. Cl<sub>4</sub>

\_\_\_\_\_

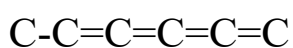
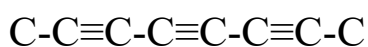
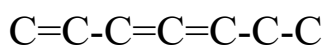
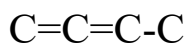
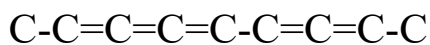
40. BCl<sub>3</sub>

\_\_\_\_\_

## 8.3 Practice

---

Name the following polymer chains (Assume correct H placement)



Draw the following (Include Hydrogen)

1,5 Heptadiyne

Butatriene

1,2,3,4 Hexateraene

2,4 Octadiyne

3 Pentene

Propatriene

Ethyne

2,5 Dimethyl 3 Propal Decane